

**TRAFFIC DESIGN MEMORANDUM  
PROJECT 23558/23559  
M-21-J: US 350  
OTERO COUNTY, COLORADO**

Submittal: December 15, 2020

*Prepared for:*



Colorado Department of Transportation (CDOT) – Region 2  
5615 Wills Blvd.  
Pueblo, CO 81008

*Prepared by:*



Stanley Consultants, Inc.  
8000 S Chester Street, Ste. 500  
Centennial, CO 80112  
Phone (303) 799-6806  
Fax (303) 799-8107

## Project Description

The CDOT Region 2 Bridge Bundle Design Build Project consists of the replacement of a total of nineteen (19) structures bundled together as a single project. These structures are rural bridges on essential highway corridors (US 350, US 24, CO 239 and CO 9) in southeastern and central Colorado. These key corridors provide rural mobility, intra- and interstate commerce, movement of agricultural products and supplies, and access to tourist destinations. The design build project consists of seventeen (17) bridges and two (2) Additionally Requested Elements (AREs) structures.

The fourteen (14) of the structures in this design build project are jointly funded by the USDOT FHWA Competitive Highway Bridge Program grant and the Colorado Bridge Enterprise (Project No. 23558). The remaining five (5) structures are funded solely by the Colorado Bridge Enterprise (Project No. 23559). These projects are combined to form one design-build project. The two ARE structures are part of the five bridges funded by the Colorado Bridge Enterprise.

The nineteen bridges identified to be included in the 'Region 2 Bridge Bundle' were selected based on similarities in the bridge conditions, risk factors, site characteristics, and probable replacement type, with the goal of achieving economy of scale. Seventeen of the bridges being replaced are at least 80 years old. Five of the bridges are Load Restricted, limiting trucking routes through major sections of the US 24 and US 350 corridors. The bundle is comprised of nine timber bridges, four concrete box culverts, one corrugated metal pipe (CMP), four concrete I-beam bridges, and one I-beam bridge with corrugated metal deck.

## Project Site

Structure M-21-J is at US 350 milepost 57.069 in Otero County, Colorado, and crosses a seasonal wash. Categorized as a R-B Rural Highway in the CDOT State Highway Access Code, US 350 traverses rolling terrain with a 65 mph posted speed limit. In the area of the structure, the highway is approximately 29 feet wide, with two 12-foot lanes and no separation of opposing traffic. US 350 is also a Colorado Scenic & Historic Byway known as the Santa Fe Trail. **Figure 1** shows the project area.

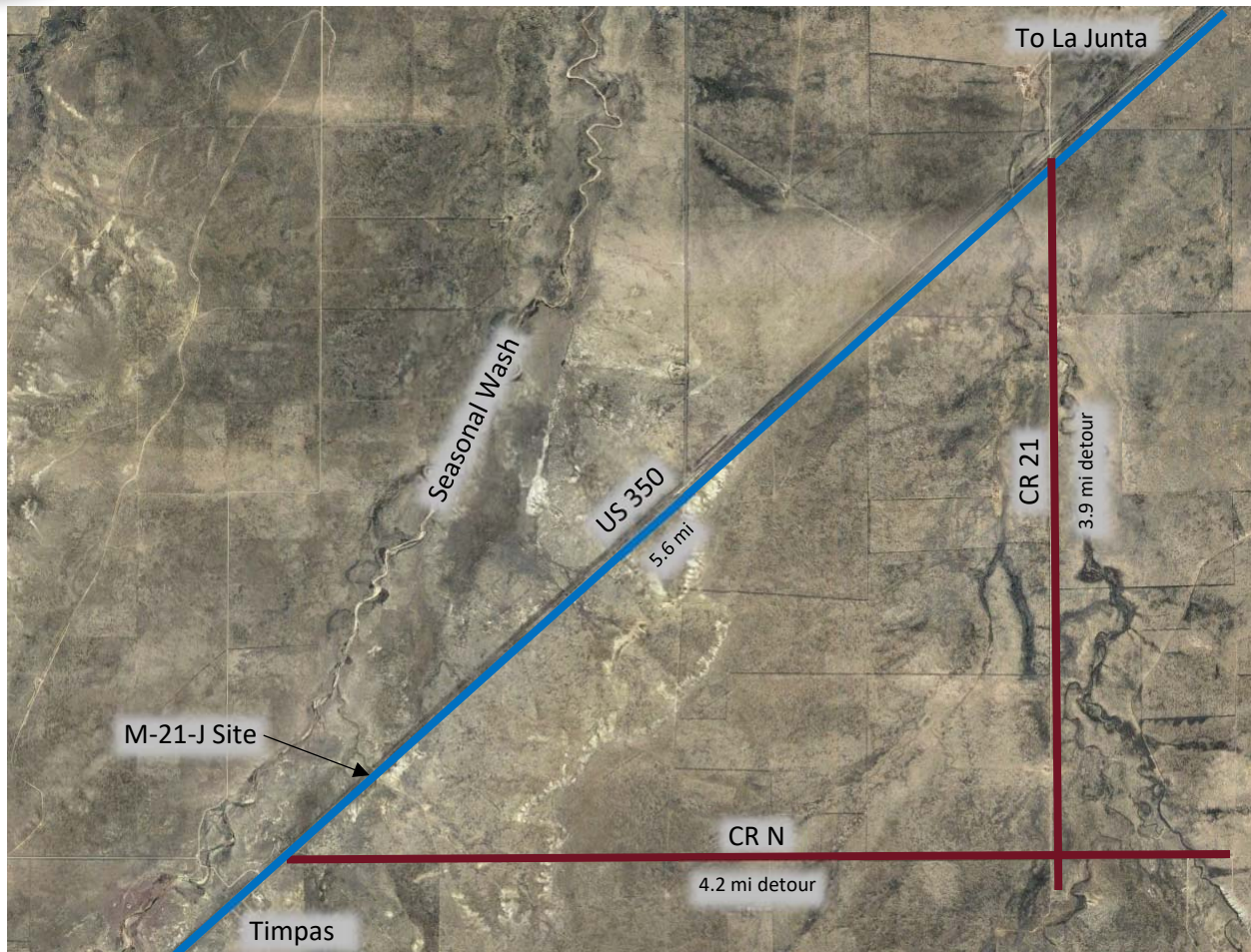
## Traffic Data

This segment of US 350 has a 2020 Annual Average Daily Traffic (AADT) of 500 vehicles per day, and a projected 2040 AADT of 781 vehicles per day, according to CDOT's Online Transportation Information Systems (OTIS). Of these daily traffic volumes, 18% are heavy vehicles. This roadway has the capacity to accommodate 2,250 vehicles every hour, resulting in a volume to capacity ratio of 0.03. In the year 2040, the volume to capacity ratio results in 0.05.

A total of one crash was recorded in the vicinity of the structure location (mileposts 57.00 to 58.04) between January 1, 2015 and December 31, 2019. This crash was located at the structure itself. The cause of the crash was due to a driver asleep at the wheel. There does not appear to be any pattern of crash type, contributing factors, or impairment of drivers. The lack of any crash related pattern results in no specific modified design features.

## Construction Phasing Alternatives

Three construction phasing alternatives have been identified to complete the construction of the proposed replacement structure.



**Figure 1: Vicinity Map**

#### Complete Closure with Detour Route

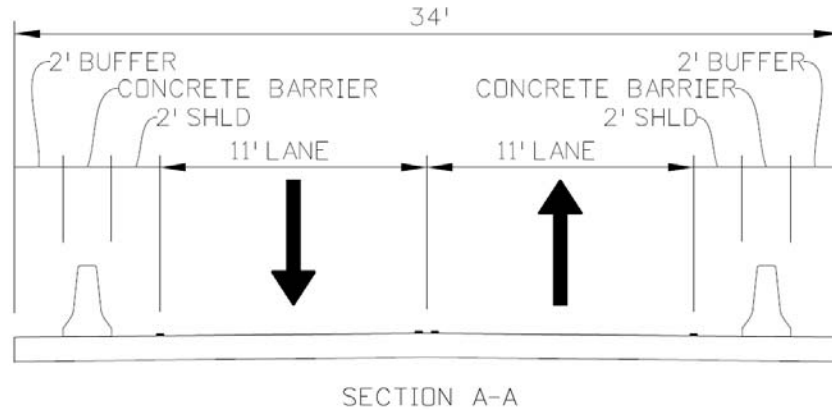
The grant application states that the roadway should not be closed during construction due to lengths of the detour routes. At this location there are no state facilities in the vicinity that could be utilized as a detour. However if complete closure were allowed, this could be accommodated by utilizing County Roads N and 21 as a detour route. Utilizing this detour route will add approximately 7 minutes (2.3 miles of out of direction travel) to the average trip between La Junta and communities southwest along US 350 to Trinidad. Local drivers may choose local roads to shorten their delay, however, those routes will not be officially marked. Note, the utilization of this detour route would also accommodate the construction of structure M-22-Y concurrent with the construction of this structure. In addition, the contractor must obtain an agreement with Otero County for the use of their roads.

#### Single Lane – Two Way Traffic Operations

Phasing the construction to accommodate a single lane of traffic operations along the route at all times should be studied further by a structural engineer retained by the Contractor. Preliminary structural analysis has determined that a phased approach to construction should be avoided out of concern for the structural integrity and maintaining traffic operations on the manipulated bridge.

### Shoofly

A shoofly has been evaluated at this structure location. With an abundance of available right-of-way to the south, a two-lane shoofly can be accommodated with minimal impacts to the area terrain, with few obstructions to consider. The shoofly would provide the least impacts to traffic operations, maintain a 45 mph posted speed limit, and be entirely within CDOT's right-of-way. Standards and guidance from Typical Application 7 of the Manual on Uniform Traffic Control Devices shall be followed. The minimum criteria within the construction zone are 11-foot lanes with two-foot shoulders on both sides. **Figure 2** illustrates the shoofly typical section, and **Figure 3** found at the end of the memorandum illustrates the shoofly plan.



**Figure 2: Shoofly Typical Section**

### Conclusions:

The recommended traffic control at this structure location, is a shoofly operation. An area detour route may be considered, however, agreements and improvements to the detour route would need to be in place with Otero County. In addition, preliminary analysis indicates traffic operations should not be maintained on a manipulated timber structure being deconstructed, without further analysis by the Contractor. Consequently, the preferred handling of traffic is recommended by way of a two-lane shoofly.

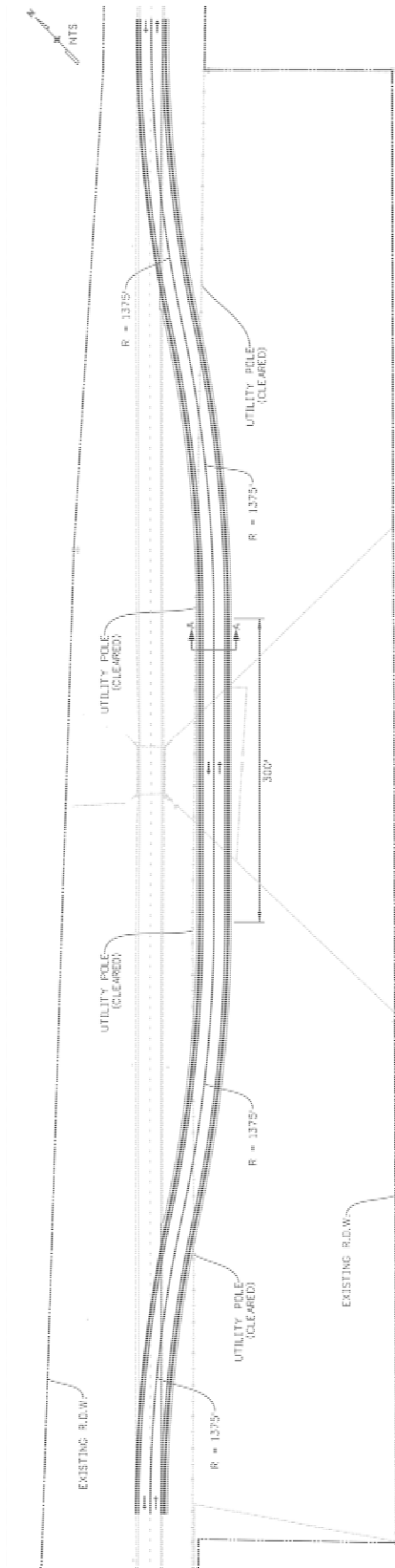


Figure 3 Shoofly